

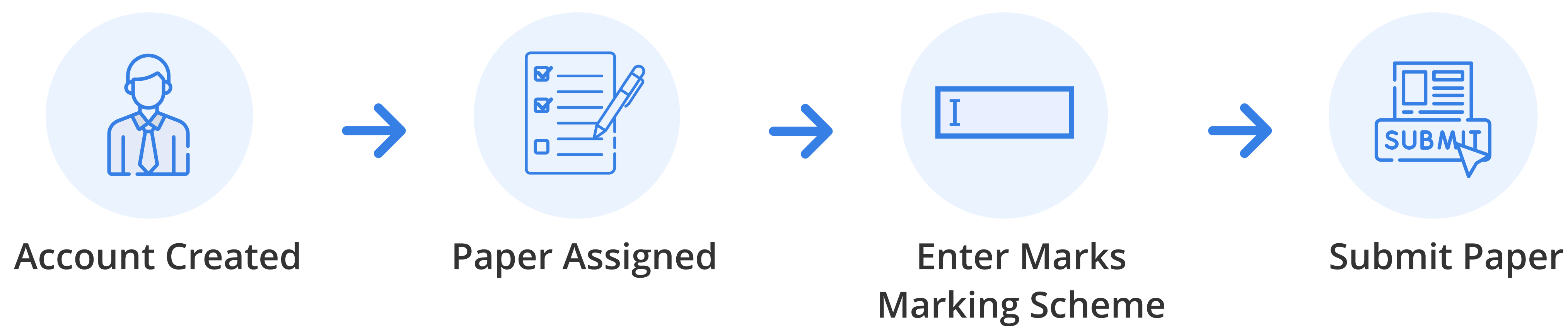


## OSM

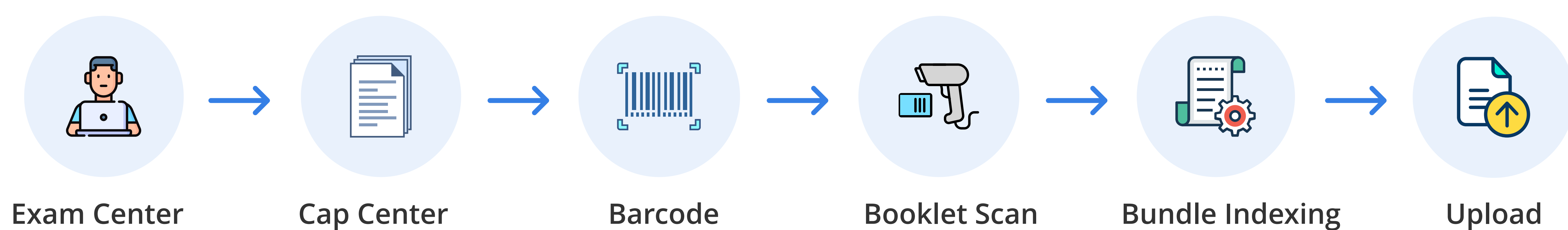
### On-Screen Marking System

Simple, scalable, and faster method of assessing student's theory answer papers

#### Evaluation Process



#### Inward Process



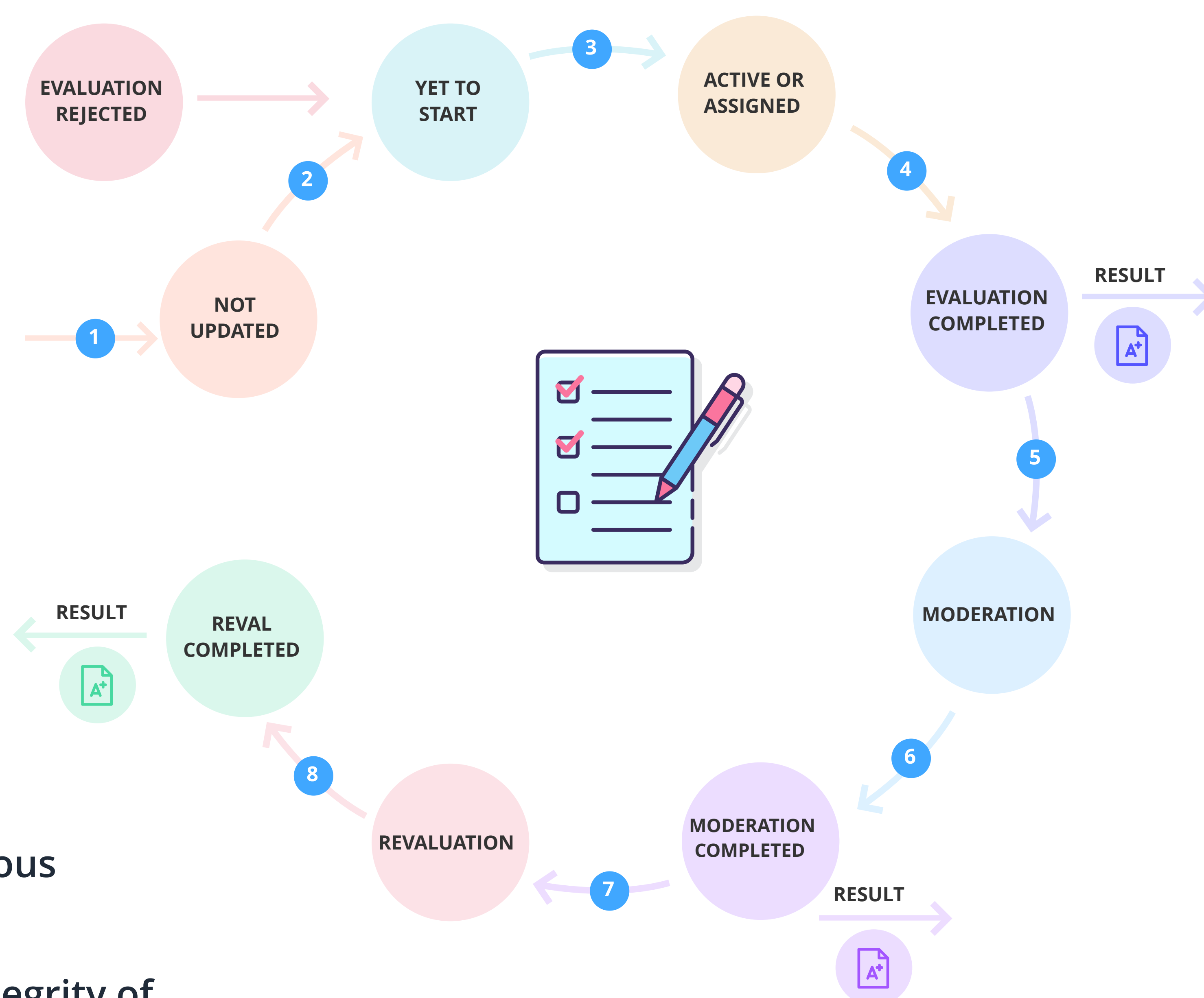
#### FEATURES

- First page of answer paper booklet is masked automatically
- Daily SMS reminders are sent to evaluators
- Controller of Examination (COE) can monitor status in real time
- Marking schemes can be created from web UI
- Evaluator access can be restricted by IPs

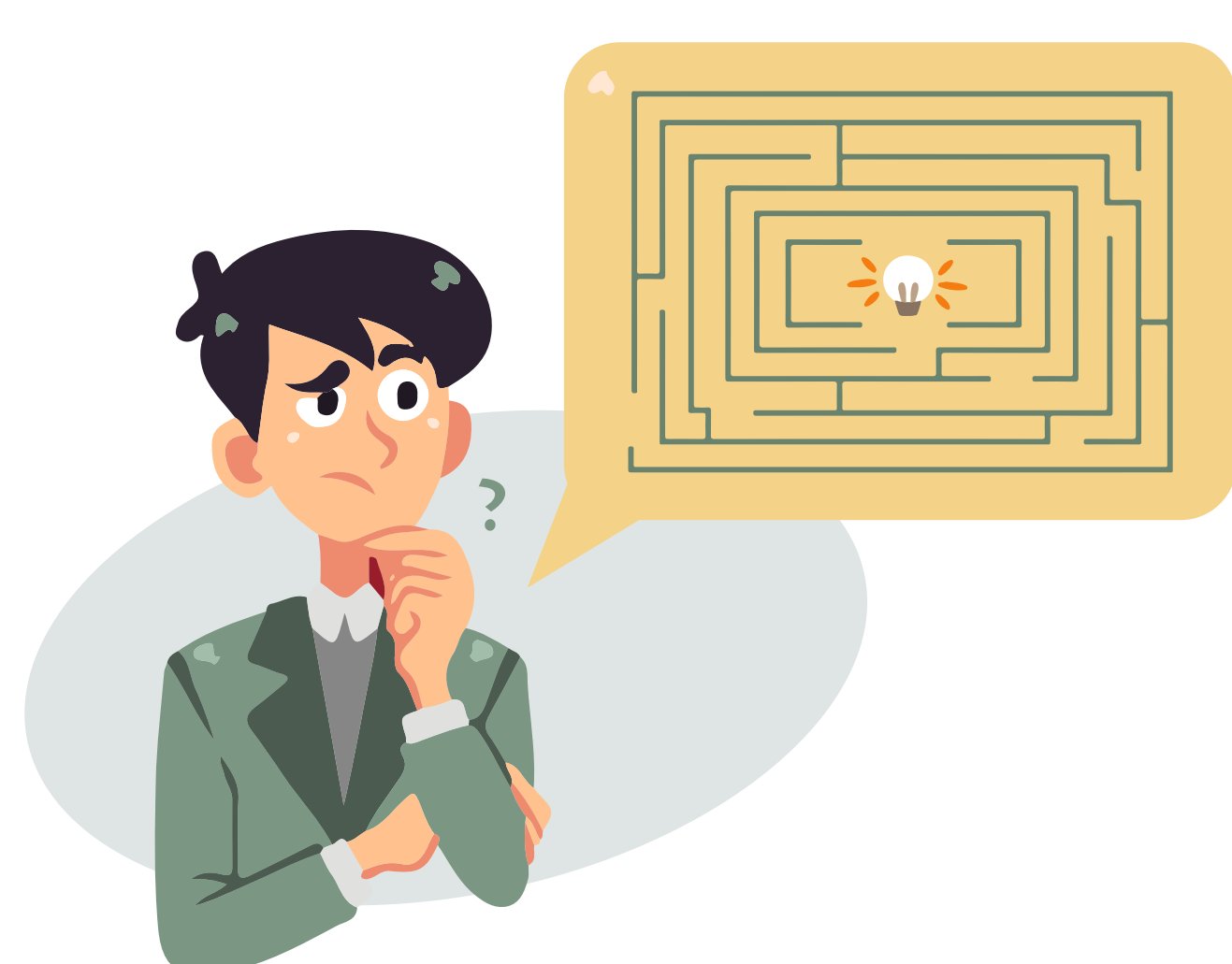
#### HIGHLIGHTS

- Over 45 million images scanned per semester
- Thousands of evaluators are using our system at various universities
- Book scanning instead of cut scanning to preserve integrity of answer paper booklets
- Terabytes of data stored online, served within seconds

#### EVALUATION CYCLE



#### PROBLEMS WITH TRADITIONAL METHODS



- Masking of answer papers has to be done manually
- Counting and other human errors during evaluation are unavoidable
- No way to track overall status of evaluation in real-time
- No way to assess evaluator performance (time taken etc.)
- Evaluation is possible only during regular working hours (no exceptions)
- Data for evaluator remunerations needs to be compiled manually