



UniApps

University exam ERP



QPD



OSM



OES



RPS



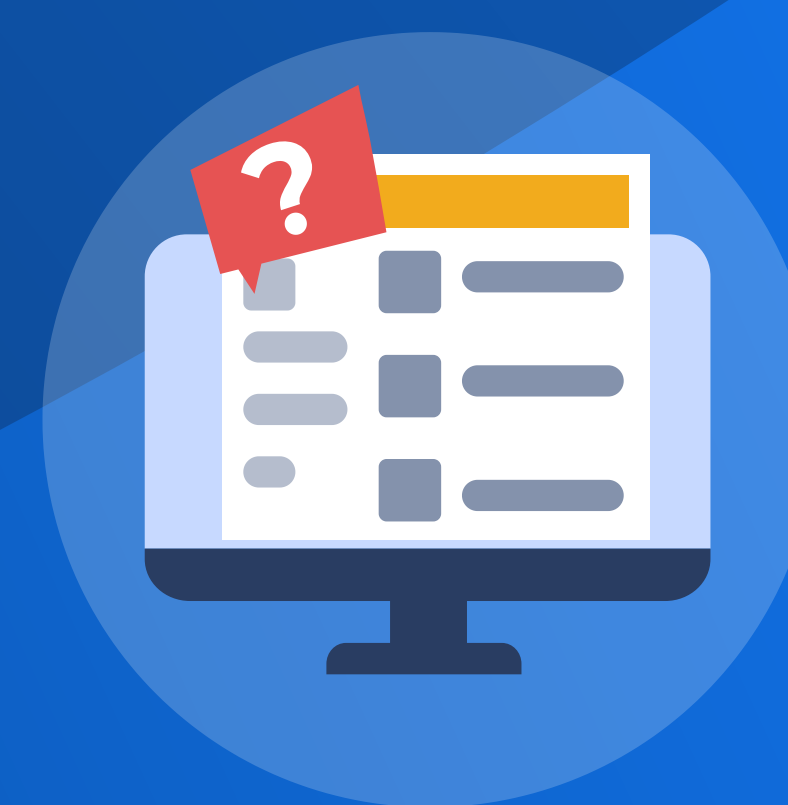
QPM



RRS



SES



QPG



WeShineTech was founded in 2011 with the vision of building software for educational institutions. In less than a year of establishment, lakhs of students across various universities, colleges, schools, and coaching classes were using our systems.

After years of working with our customers and learning from them, we have built our flagship product – UniApps. Each application in UniApps is the result of our commitment to solve our customers' problems.

We've conducted millions of assessments, delivered lakhs of question papers, scanned crores of answer papers images. This phenomenal growth is an indication of trust our customers have in us.

We're a team of dedicated individuals focused building high quality education software. Our products and services are a result of our persistence towards this vision.

We believe that our success is only after our customers' success.



UniApps

University exam ERP.

UniApps is suite of applications to automate university examination processes. It is an end-to-end student lifecycle management system right from student admission to issuing degree certificates. UniApps reduces administrative costs by adopting online best practices.

Applications



QPD

Question Paper Delivery System



OSM

On-Screen Marking System



OES

Online Examination System



RPS

Result Processing System



QPM

Question Paper Management System



RRS

Result Redressal System



SES

Student Enrolment System



QPG

Question Paper Generation System

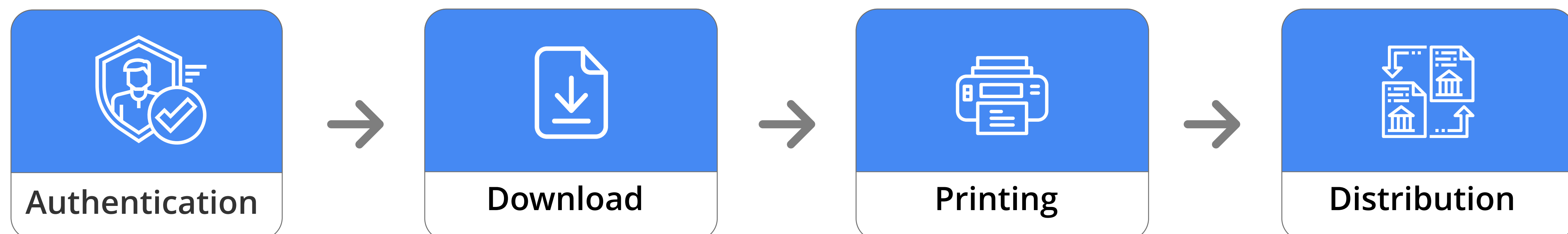


QPD

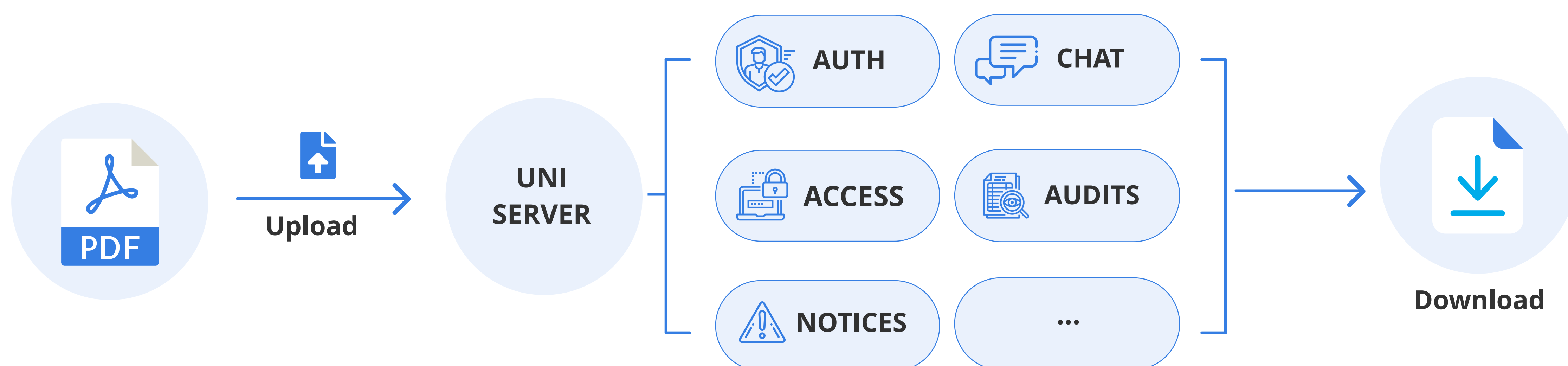
Question Paper Delivery System

Safe, secure, and reliable method of online delivery of question papers

Online QPD - Colleges



Online QPD - University



FEATURES

- Two-factor authentication (OTP), biometric authentication (face recognition, fingerprint recognition)
- IP restrictions
- Watermarking of downloaded question papers
- Access control of question papers
- Live & deferred audits from logs
- Question paper correction notices to colleges
- In-built group chat

HIGHLIGHTS

- Over 25 thousand question papers are being delivered every semester
- System is deployed at more than two thousand colleges
- Hundreds of papers are being delivered in a single session
- Assisted in investigations by providing paper audit logs

PROBLEMS WITH TRADITIONAL METHODS



- Paper leaks due to multiple change of hands
- Papers are delivered several days before exams
- Last moment change in question papers are not possible
- No way to backtrace leaked question papers
- No way to verify and ensure that only authorised personnel have access
- Complex logistics are involved - bank lockers, police, transport etc.



OSM

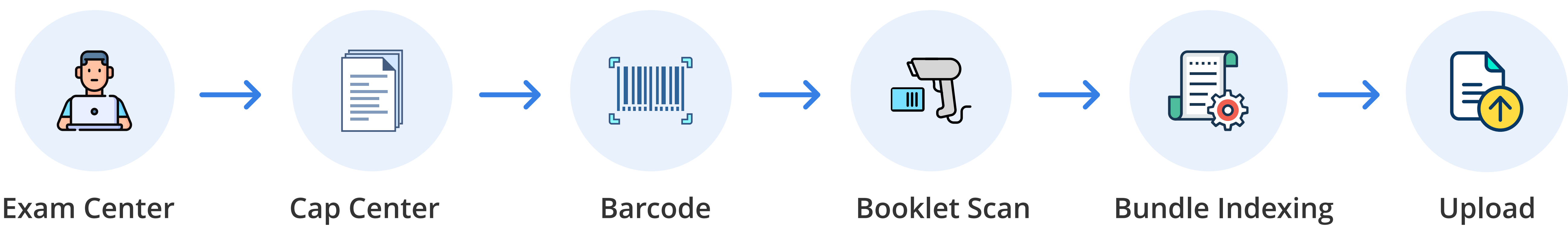
On-Screen Marking System

Simple, scalable, and faster method of assessing student's theory answer papers

Evaluation Process



Inward Process



FEATURES

- First page of answer paper booklet is masked automatically
- Daily SMS reminders are sent to evaluators
- Controller of Examination (COE) can monitor status in real time
- Marking schemes can be created from web UI
- Evaluator access can be restricted by IPs

HIGHLIGHTS

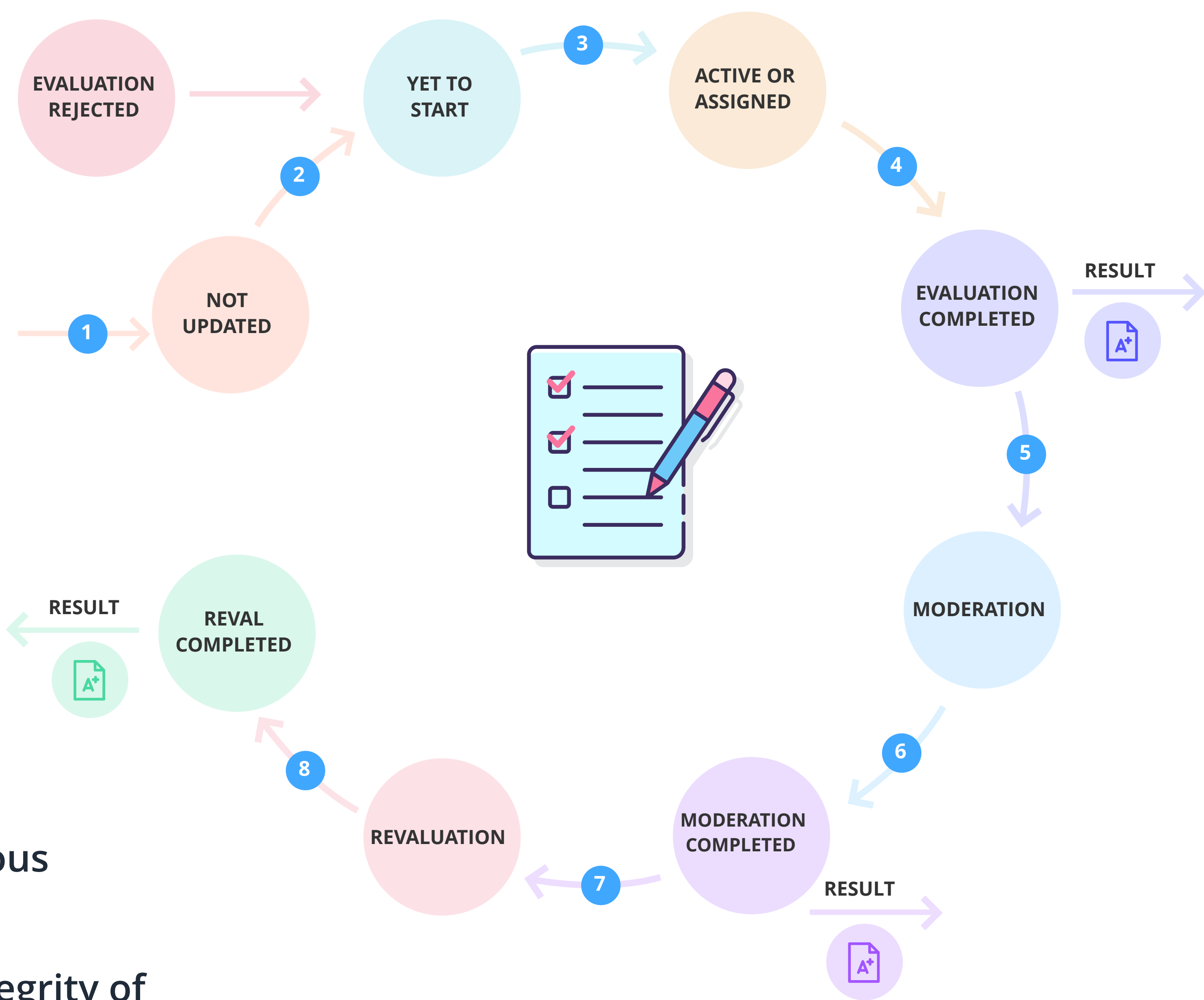
- Over 45 million images scanned per semester
- Thousands of evaluators are using our system at various universities
- Book scanning instead of cut scanning to preserve integrity of answer paper booklets
- Terabytes of data stored online, served within seconds

PROBLEMS WITH TRADITIONAL METHODS



- Masking of answer papers has to be done manually
- Counting and other human errors during evaluation are unavoidable
- No way to track overall status of evaluation in real-time
- No way to assess evaluator performance (time taken etc.)
- Evaluation is possible only during regular working hours (no exceptions)
- Data for evaluator remunerations needs to be compiled manually

EVALUATION CYCLE

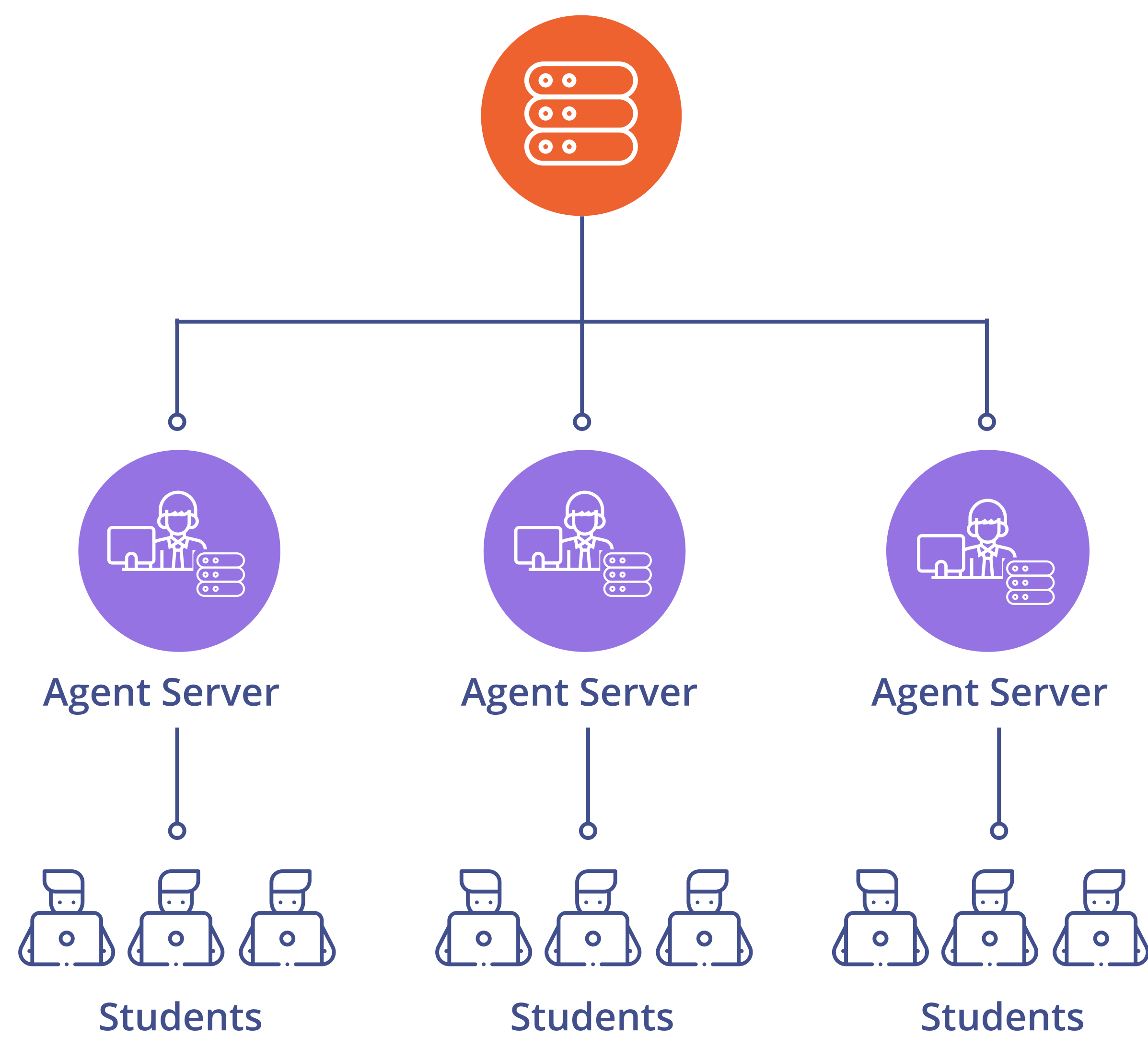




OES

Online Examination System

Highly scalable, distributed online examination system



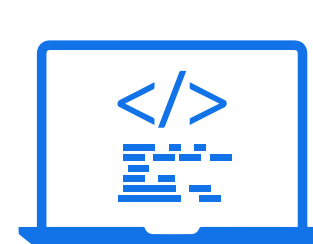
- OES is a distributed online examination system to conduct high volume MCQ based exams.
- Content management, exam centre management, user management, and real-time result processing are some of the important components of this system.
- We support industry standard software such as Safe Exam Browser and kiosk operating systems on the student machine to enhance security of the system.
- Our premium features such as face recognition and video proctoring enable Internet based exams.

FEATURES



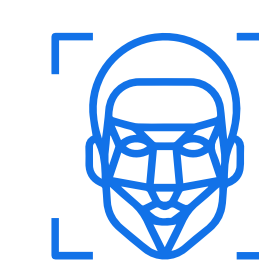
Safe Exam Browser

Safe Exam Browser is a web browser environment to carry out e-assessments safely.



Netboot

Netboot is a technology where customised operating system is loaded onto the client machines over LAN.



Face Recognition

Candidate's face is captured through a webcam and matched with a photo ID.



Video Proctoring

Zoom integration is available for video proctoring during remote exams.



Audits

Candidate's activity logs are captured and are available for auditing.



Security

Security best practices such as HTTPS, OTP, session restrictions are followed.



Question Types

MCQ, comprehension, essay (typing & file upload) types of questions are supported.



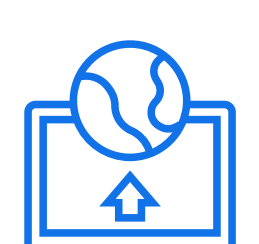
Scalable

Our horizontal scaling techniques support a large number of simultaneous exams.



Modern Browser

We support Google Chrome, Mozilla Firefox, and Safe Exam Browser.



Easy Deployment

Pre-built OS images help in easy deployment of our agent software at exam centres.



ODT Content

Question bank is built offline using Openoffice (ODT files) and uploaded to the system.



Results

Results are calculated in real-time after candidates submit exams.

RESILIENCE



HARDWARE FAILURE

Student exam data is continuously sent to the main server from the agent server located at the exam centre. In case of hardware failures at the exam centre, a new agent server is set up with latest data available from the main server.



INTERNET CONNECTIVITY FAILURE

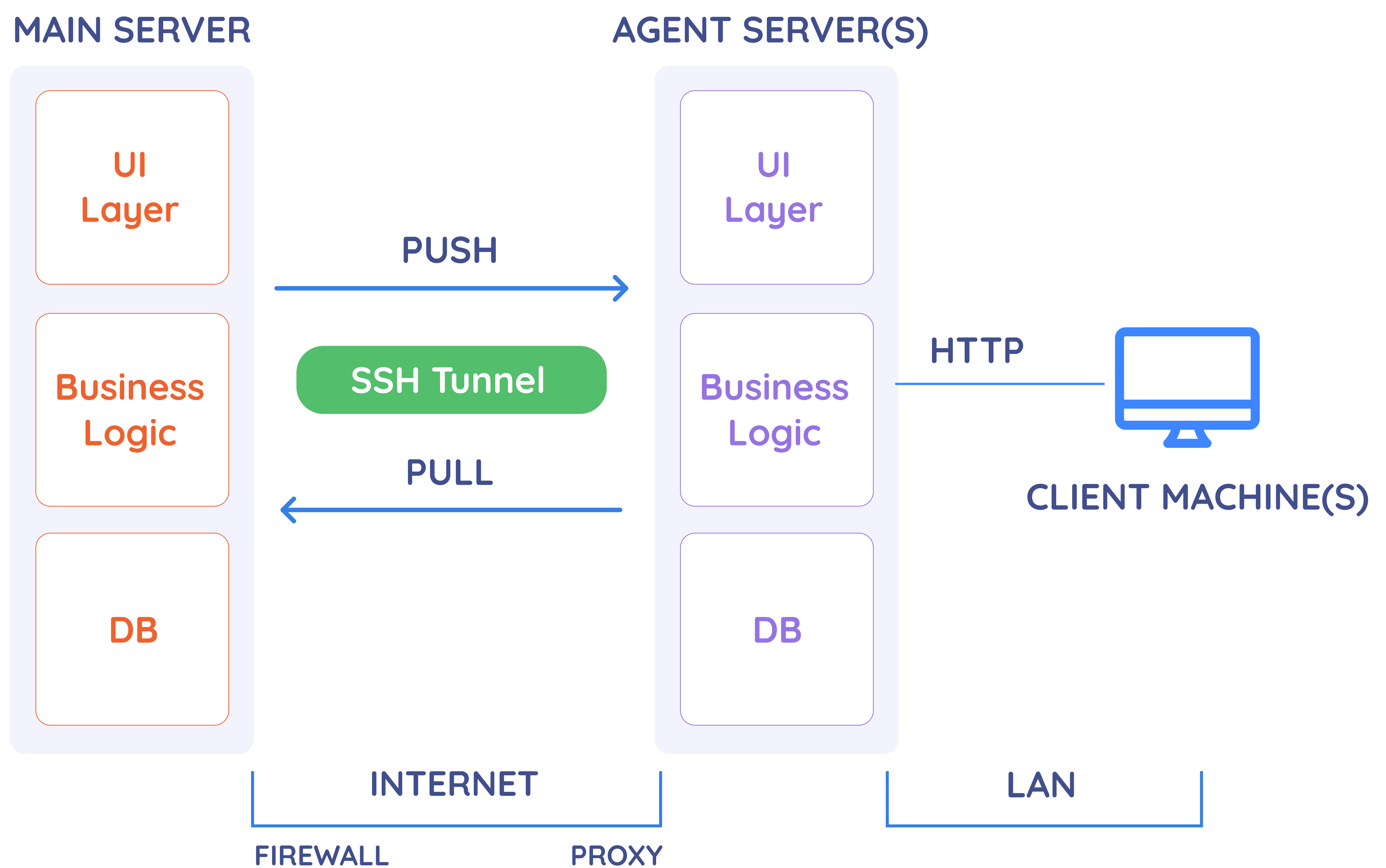
Exam data is sent to the agent server at the exam centre. Entire exam is conducted locally at the exam centre. Therefore, any internet connectivity issues during the exam does not impact the exam in any way.



POWER FAILURE

In an unfortunate event of a power failure on the client machines, the student's exam will resume from the same state when power failure occurred.

APPLICATION ARCHITECTURE



HIGHLIGHTS

- More than 10 million examinations have been completed!
- Geographically distributed for reliability and scale, but centrally controlled from the main server
- Full control over software stack (agent server, netboot)
- Highly scalable - 80 thousand exams conducted in a day



RPS

Result Processing System

Student lifecycle management system for universities



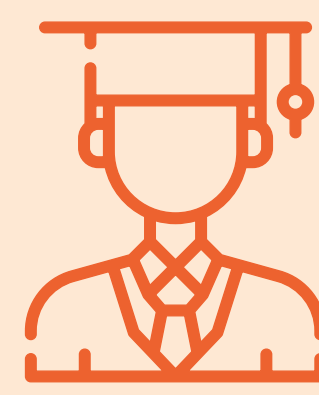
UNIVERSITY

- Student onboarding
- Student’s institute, course, and semester management
- Curriculum management
- Exam form-filling based on examination type and student history
- Monitoring form-filling and result upload status
- Result processing and publishing



COLLEGE

- Assigning appropriate semesters to the students (in case of elective semesters)
- Monitoring form-filling status and approving exam forms
- Downloading and issuing exam hall tickets
- Uploading marks of internal exams and monitoring marks entry status
- Student exam attendance management
- Downloading and issuing grade cards to students



STUDENT

- View details of assigned course, semesters, subjects, credits etc.
- Apply for exams (regular, backlog, and revaluation)
- Download exam hall tickets
- View published results of all subjects & semesters
- Other student services

FEATURES



Curriculum Management

Faculty, course, semester, and subject management. Change of pattern is also supported.



Profile Management

University admin, college admin, and student profiles are supported in the system.



Exam Formfilling

Exam forms can be filled online. Exam form is intelligently shown based on student backlog subjects, attendance etc.



Fee Management

Year-wise, semester-wise, and course-wise fee distribution matrix is supported.



Online Payment

Integration with Razorpay and Atom is supported for online fee payment.



Result Calculation

Complex result calculation mechanisms are supported through a feature called Result Processing Pipelines (RPP).



Monitoring

Various logs are maintained when results are uploaded and modified.



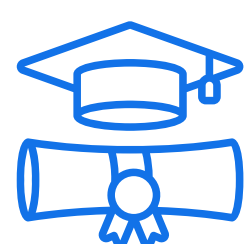
Promotion Rules

Student promotion rules can be created and customised in the system.



Marks Upload

College staff can enter student’s internal marks by uploading a CSV file.



Degree Certificate

System can generate digital copy of degree certificates from a predefined template.



Result Pipeline

Highly customisable complex result processing algorithms can be easily created in the system.



Data Exports

Various form-filling and results data can be exported from the system in CSV format.



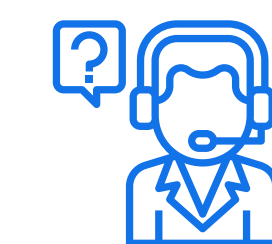
Exam Scheduling

Exam time-tables can be created in the system.



Grade Card Generation

Grade cards are automatically generated as an output of result processing pipelines (RPP)



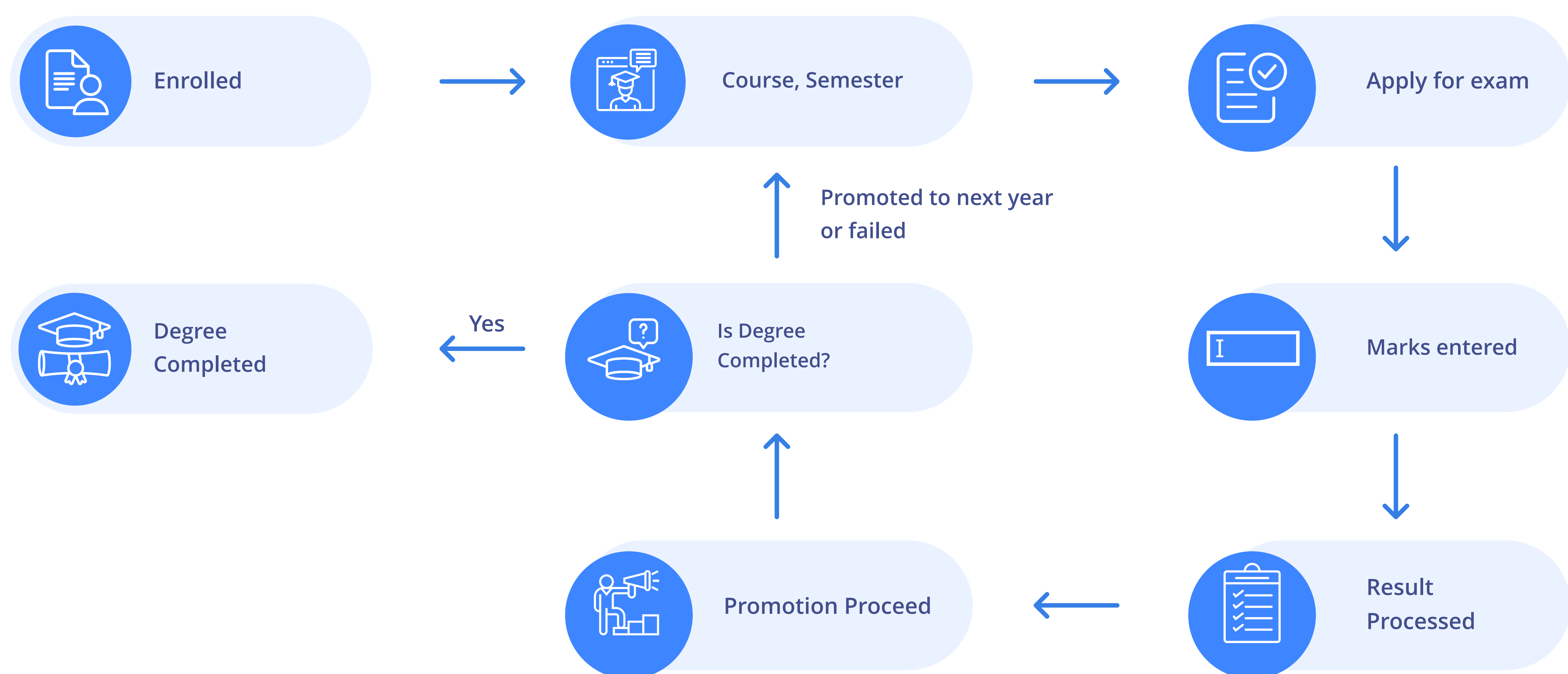
Student Services

Students can apply for result redressal and raise other service requests through the system.

RESULT PROCESSING PIPELINE



STUDENT LIFECYCLE



HIGHLIGHTS

- Millions of student results have been processed
- Lakhs of grade cards have been issued
- More than 50 thousand students are registered
- Used by state level & other prominent private universities
- Seamless integration with other Uniapps products



QPM

Question Paper Management

Question paper lifecycle management; appointments to manuscripts

PROBLEMS WITH TRADITIONAL METHODS



- Appointments do not reach paper setters on time
- Acknowledgements have to be created manually
- Offline tracking processes are error prone
- No log of who accessed manuscripts
- No way to know submitted question papers in realtime
- Data required for paper setter remuneration needs to be compiled manually

OUR SOLUTION



Step 1 - Send Appointment

Send appointments through email and notify by SMS.



Step 2 - Receive & ACK

Search by appointment number and receive papers at manuscript dept.



Step 3 - Assign Barcode

Assign unique barcode sticker on each envelope and mask subject and other information.



Step 4 - Dtp Process

Typing, proof reading, PDF creation.

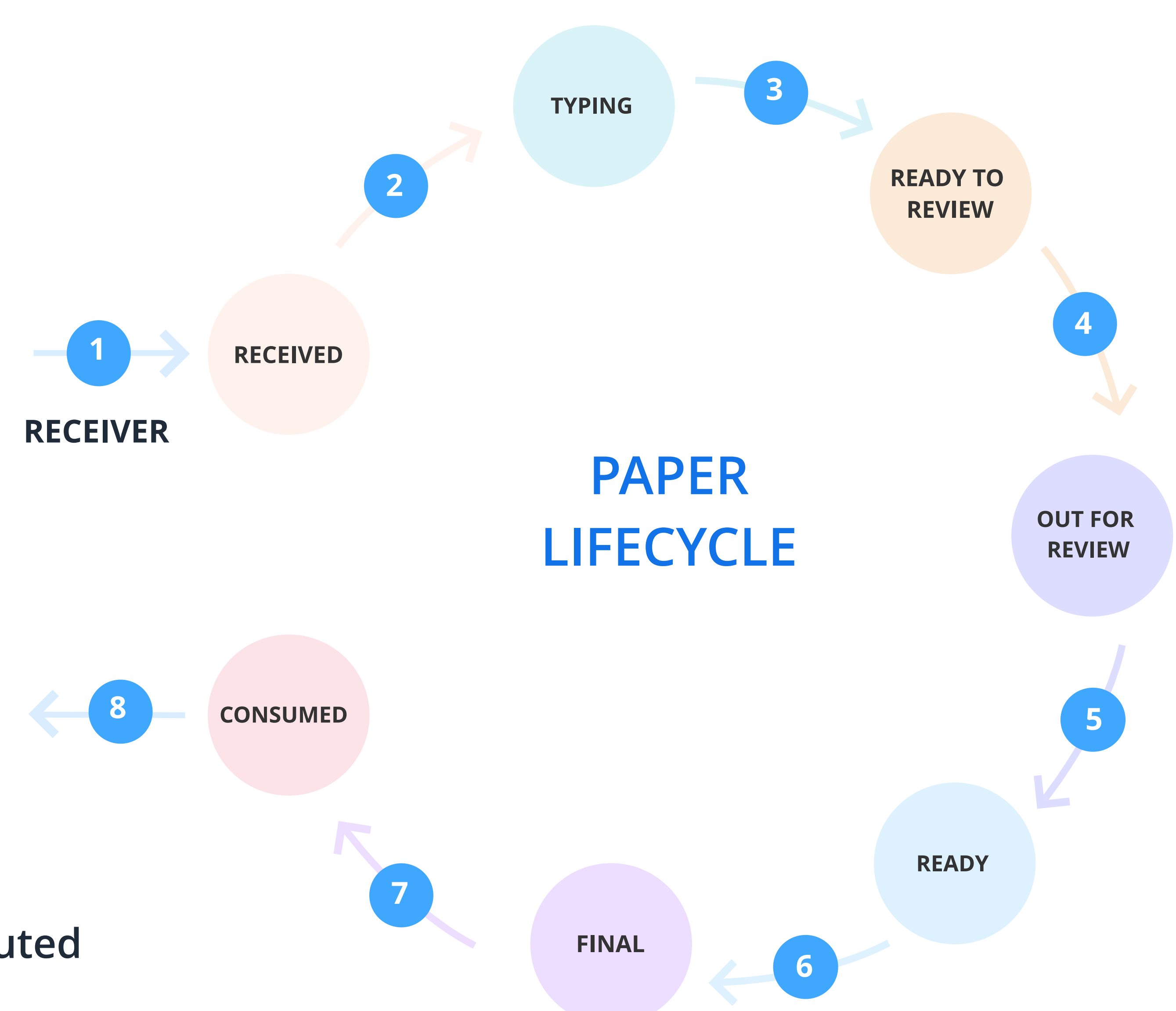


Step 5 - Ack & Store

Print PDF, final acknowledgement letter. Store manuscript in strongroom.

FEATURES

- Prioritisation of DTP based on exam timetable
- Send bulk appointments
- Update remuneration data before final acknowledgement
- QPM acts as a question bank for QPD system
- QPD picks question papers randomly from QPM pool
- Integration is seamless and adds great value to QPD system



HIGHLIGHTS

- Thousands of appointments sent from our system at reputed universities
- Lakhs of question papers inwarded, DTP processes completed
- Paper availability for the next 30 days is shown
- Paper tracking is done based on a masked barcode instead of subject details



RRS

Result Redressal System

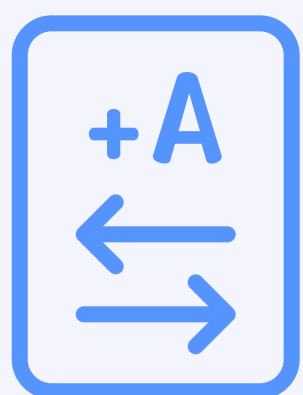
Quick delivery of answer paper photocopies to students through an online system

PROBLEMS WITH TRADITIONAL METHODS



- Offline photocopy application process takes time and is error prone
- Middle-entities involved (colleges, admins etc) in delivery process
- Payment reconciliation is a big problem
- Same process has to be repeated in sequence for revaluation and recounting taking even more time
- Universities are unable to complete redressal process before start of next exams
- If process is not completed on time, students are forced to repeat exam in next semester

OUR SOLUTION



Results Imported



Student Login



Result Selection



Online Payment



PDF Download

FEATURES

- Date restrictions on result selection for redressal
- Result selection order can be enforced (e.g. revaluation is allowed only after photocopy is processed)
- Daily report of new redressal applications
- Student email and mobile number are verified by system

HIGHLIGHTS

- We have delivered photocopies (PDF) instantly when our customers have integrated with our On-screen Marking System
- When deployed as a stand alone system (without OSM), we have been able to deliver photocopies within a couple of days
- Payment gateway transfers fees directly to university bank account
- Colleges are not involved in the process



SES

Student Enrolment System

PRN generation, student document verification, and onboarding to university

PROBLEMS WITH TRADITIONAL METHODS



- Large number of student documents need to be collected and verified
- Variety of student fees based on various eligibility criteria
- Offline payment is slow and cumbersome
- Various reports and statistics need to be compiled for management review
- Document storage requires space and physical protection

OUR SOLUTION



Step 1- Student Registration

Student registers with email and mobile number. Both email and mobile are verified through OTP



Step 2 - Form Filling

Student fills out bio, educational details, scholarship eligibility, and other information



Step 3 - Document Upload

Photo, signature, allotment letter, caste certificate, mark sheet, income certificate etc.



Step 4 - Payment & Submit

Payment is calculated based on course, caste, scholarship etc.



Step 5 - Document Verification

Colleges or sub centres verify student document and approve the application



Step 6 - PRN Generation

Upon approval, PRN is automatically generated and assigned to student

FEATURES

- Simple step-by-step student application process
- Online document verification by college admins
- Automatic fee calculation and online payment
- Various reports and statistics

HIGHLIGHTS

- Over 1 lakh online admissions completed
- Real-time admission statistics are available
- Automatic fee calculation based on several parameters such as caste, income, course, domicile etc.
- Online document verification for colleges and universities
- Automatic PRN generation



QPG

Question Paper Generation

Rule based automatic question paper generation from question bank

PROBLEMS WITH TRADITIONAL METHODS



- Paper setter submits question paper instead of questions. Therefore, the system is not completely secret
- Offline submission of question papers requires paper setters to be physically present at the examination department
- Randomisation and regeneration of question papers from old papers requires manual intervention
- Layout and type-setting needs to be done manually for each paper

OUR SOLUTION



Step 1- Send Appointment

Send appointments to paper setters through QPM system



Step 2 - Upload Questions

Paper setters upload ODT files or MS Word files with questions in required format



Step 3 - Create Rules

Paper setters create rules for paper generation



Step 4 - Generate Papers

System automatically generates required number of papers (PDF)

FEATURES

- Improves secrecy because even the paper setters have no insight in the generated question paper
- Focus shifts to creating better questions and improving question bank
- Seamless integration with QPM, QPD systems



www.uniapps.in



WeShineTech Pvt. Ltd. Office no. 104,
Mantri Alpine, Mumbai-Bangalore Highway,
Above Crystal Honda Bavdhan,
Pune - 411021
sales@weshinotech.biz